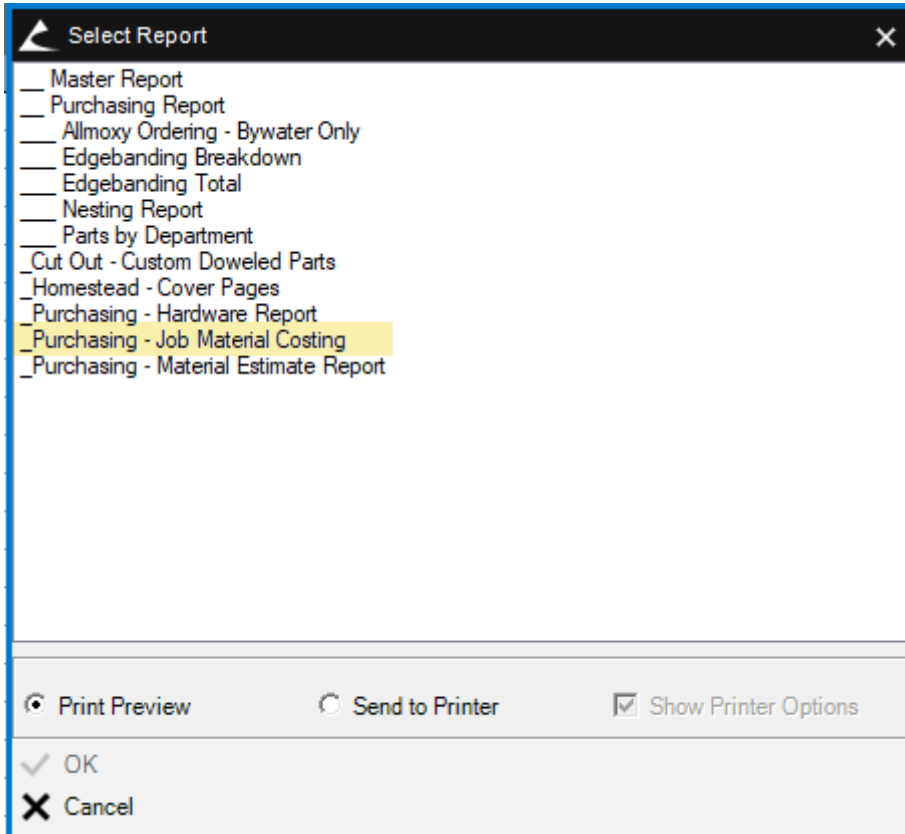


# Purchase Order IIF Importing

When running the **\_Purchasing - Job Costing Report** you will be asked to save an IIF file, just put this where you can get to it from QuickBooks.



Partially imported files

File partially imported

**!** We imported your file, but some items need your attention

Imported file name : 23460-Gallagher B2\_PurchaseOrder.iif

ITEMS	SUCCESS	FAILED
Lists (106)	99	7
Transactions (15)	13	2

**What's Next ?**


- We've created a new IIF file for failed records with error info
- Select **Review Now** to open and fix the errors or select **Open in folder** to view where this file is saved
- Save and re-import this file once you've corrected the errors

File name : 23460-Gallagher B2\_PurchaseOrder\_0319110649  
Location : J:\


**1** Review **2** Open in folder Close


How do you want to open this .iif file?

Keep using this app

 QuickBooks Launcher

Other options

 Notepad **2**

 Look for an app in the Microsoft Store

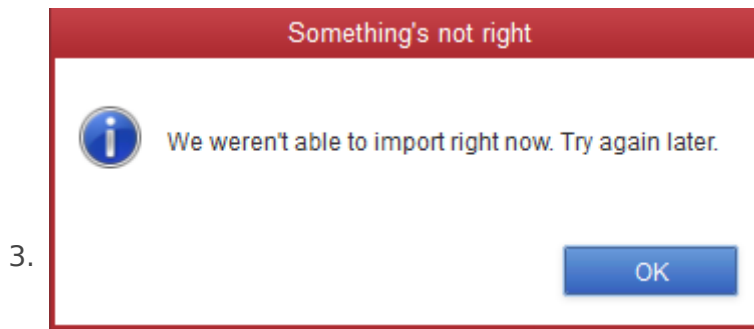
More apps ↓

OK

You will need to review the errors and correct them in the QuickBooks data by adding the missing accounts or items.

## Common Errors

- Hardware:Drawer Slides:Blum:Drwr Slide Blm Tem 563.457 (18)** The Item does not exist in Quickbooks  
This means we need to add the item category **Hardware:Drawer Slides:Blum** to the item list
- [ERROR] The record at (or starting at) this line could not be imported. There is an invalid reference to QuickBooks Post Account "Inventory:Hardware" in the ItemInventory.  
*I'm not 100% sure what this error is telling me. If we need to change the Inventory:Hardware or any other account to something else please let me know.*



If you get this error tell Brad A and send him the IIF file, it essentially means that it couldn't determine the associated item in QuickBooks and Brad will need to adjust the script to account for this item.

**Items to add --> Account Name** *(There are probably a lot more):*

1. Buyout:Doors --> Cost of Goods Sold:Direct Material:Doors
2. Buyout:Glass --> Cost of Goods Sold:Direct Material:Glass
3. Edgebanding --> Cost of Goods Sold:Direct Material:Edgebanding
4. Hardware:Pulls --> Cost of Goods Sold:Direct Material:Accessories-Hardware

## Things to be aware of

1. Material names cannot be longer than 31 characters. IIF generator script will automatically attempt to shorten the name to 31 chars or less but in some cases the name will be so long that shortening it will result in most of the name being cut off, just be aware of this.
2. Brad A used a copy of the QuickBooks data from February to tweak the import, there may be some things in the current data that need to be added.
3. **Sierra Forest Products** exists as a Customer and not a Vendor. Importing complains that it already exists. This needs to be fixed, I was able to fix it by renaming the Customer slightly.
4. I am not sure if the **Inventory:** accounts are the correct place to send this data, if it's not please let me know and I can change it.

---

Revision #5

Created 18 March 2025 17:34:47 by brad

Updated 19 March 2025 20:53:53 by brad